



American Institute of Professional Geologists Michigan Section

October 2015

From the President's Desk



After serving nearly 10 years on the executive committee for the Michigan Section, I can honestly say it has been a rewarding experience. AIPG, as an organization, amazes me with the willingness of its members to step up each year to volunteer for leadership roles and support the profession. If

you are interested in serving on the executive committee and have questions, please give me a call.

Linda Hensel and I recently attended the 50th anniversary of the Geosciences Department at Western Michigan University. Both of us are graduates of the program and represented AIPG. Besides the programs and events offered by WMU during this anniversary celebration, the highlight of the event for me was being able to donate \$5,000 to the Core Kids program at WMU. This type of contribution is going to make a difference and allow the program to continue providing K-12 kids a hands-on experience in geoscience. This donation was possible because of our members and generous sponsors.

Looking ahead, the organization is pulling together details and setting aside funding so that the Michigan Section can offer an annual scholarship to one or more student members. AIPG Michigan takes pride in our commitment to education and growing our profession. Geoscience students who are active in AIPG are provided with tremendous opportunities to advance their education.

I am looking forward to seeing you all at the December meeting where we will announce the incoming member of the executive committee and award several students \$\$\$ for their poster presentations.

Dawn Prell, CPG – 2015 Michigan Section President

Section Officers Reports

President: Information presented in the “From the President’s Desk” article above.

Vice President (Brian Burke): I was pleased to



represent the Michigan Section as our delegate to the national meeting in Anchorage, Alaska during September. The business meeting was held all day, Friday, September 18, 2015 in the Hilton Hotel chart room which is on the 15th floor and provided distracting views of the city nestled between the Chugach Mountains and

Cook Inlet. The Chugach Mountains are composed of seafloor sediments of highly metamorphosed greywacke with quartz veins which were thrust upward when the Pacific Plate plowed into the North American Plate. Anchorage sits on glacial deposits and the Cook Inlet is a glacial fjord formed during the procession and recession of continental ice. On a clear day the volcanic mountains of the subduction zone (including distant Denali) are visible to the north.

Each AIPG section that was present gave a report on the successes and challenges that were encountered in 2015. I was pleased to report that we continue to have committed members, strong student chapters and a solid balance sheet. The Michigan Section has a very good reputation nationally and several sections were interested in learning about our fundraising efforts. Section members Adam Heft (president elect), Larry Austin and Sara Pearson were also present for the business meeting and I’m happy to report that the four new members of the Advisory Board – Jeffrey Fredrick (Northeast), Kevin Gooding (Hawaii),

Donald Lumm (Kentucky) and Shanna Schmitt (Minnesota) had our full support. The new Advisory Board has a good mixture of experience and professional background. Our challenge moving forward is to continue to recruit young geologists as older members retire.

Speaking of Sara, she received special recognition (Section Leadership Award) from National for her dedication to the Michigan Section, particularly her contribution to our annual conference. It was nice to see her honored. I also learned that she is an avid photographer. Since I am not, I'm looking forward to seeing some of her photos at our December meeting. See you all then and please consider getting involved.

Treasurer (Linda Hensel): AIPG MI Section is in good financial standing.



The Executive Committee endeavors to continue to be successful with our annual golf outing and summer workshop. The income generated this year has allowed us to better achieve our primary goal, which is to

continue to cultivate interest in the geosciences as a career by providing scholarships to college students in our student sections.

We welcome your input to help us continue to build AIPG MI Section. If you cannot commit to becoming a section officer, we understand but you can let us know your ideas so we can implement them. We are only as strong and diverse as those who become involved.

Please feel free to contact any of us on the 2015 Executive Committee if you have any suggestions or ideas for future activities.

Secretary (Tim Woodburne): I encourage each of



you to come out to at least one of our quarterly meetings. The most recent meeting on October 1st was at GVSU Eberhard Center in downtown Grand Rapids. We had a very good speaker.

On September 11th we had an executive committee meeting where we discussed the upcoming Annual Section Meeting at the Kellogg Center on MSU's campus in East Lansing. We have a good speaker lined up, and discussed plans for the student posters and teacher grants that will be awarded that night. We also discussed the work on the augmented reality

sandbox by Dawn Prell and Adam Heft for the Gerald Eddy Discovery Center.

Finally, on a personal level, I really enjoy seeing you all at our meetings and other events. Many Section members attended the DEQ's Environmental Remediation and Risk Management Conference in Grand Rapids on October 14th. It was great to see Sara Pearson as moderator and her presentation on the GSI pathway; Don Conway and his Four Corners – Traverse City presentation; and Joel Parker and his presentation with Americhem. What I am saying is that keep in mind that the work that we do is important and needed. So always do a good job. The results that we produce help to promote the role of geology and geologists in society. By its very nature, it advocates for our profession. And decisions are made based on the results that we produce and show in our reports.

Past President (Craig Savage): It has been my great



pleasure and honor to serve with the AIPG Michigan Section's Executive Committee over the past five years. Through my service with the Executive Committee, I have gained a better understanding of the level of effort and dedication put forth behind the scenes by

many individuals to make our events - quarterly meetings, field trips, golf outings, brownbag sessions, annual workshops, educational scholarship programs, and student chapter outreach efforts – all successful beyond our expectations.

Working with the Executive Committee and assorted Planning Committees has been personally and professionally rewarding. I will leave the Executive Committee after this year with mixed emotions – on one hand, it will be a relief to leave the hard work of planning events in the capable hands of the remaining Executive Committee and Planning Committee members so I can re-focus on other endeavors. On the other hand, I will miss the camaraderie of working with the devoted individuals who make the Section great, and the feelings of satisfaction associated with returning something to the organization that provides us all with such tangible benefits.

I may not be on the AIPG Executive Committee in 2016, but will remain involved by working with some committees to help keep the machine running. I thank you all for voting me in as Secretary in 2011 and allowing me the opportunity to participate in helping make the Michigan Section a model for other chapters to follow.

Coming Events

December 10, 2015: Michigan Section AIPG Annual Meeting, Kellogg Center at Michigan State University, East Lansing. Jeff Kimble and Tricia Edwards of USEPA Region 5, will be speaking about “Michner Plating – Time Critical Removals.”

Location: Kellogg Center, Michigan State University, East Lansing.

Dinner: Antipasto Platter with Grilled Vegetables, Kalamata Olives, Artichokes, Cherry Peppers, Mushrooms, Provolone, and Salami, Classic Caesar Salad, Croutons, Parmesan Cheese, and Caesar Dressing, Italian Bread, Salad with Marinated Cucumber and Tomatoes with Balsamic and Italian Dressings on the Side; Orecchiette Pasta Salad with Grilled Vegetables, Fresh Mozzarella and Roasted Tomatoes with Balsamic Drizzle; Traditional Chicken Parmesan; Grilled Salmon with Toasted Pine Nuts, Parsley, and Butter Sauce; Porchetta-Roasted Pork Loin Marinated with Garlic Rosemary Demi Cheese Tortellini Alfredo; Smoked Brisket of Beef, Smokey Tomato Mushroom Sauce, Risotto with Sautéed Mushrooms, Asparagus, and Bell Peppers, Ratatouille Vegetables, Crusty Italian Loaves of Bread and Tomato Focaccia, Mini Cannoli Chocolate Biscotti, House-made Petit Desserts include Minimis, Toasted Almond Amaretto Mousse, and Italian Rum Cake, Freshly Brewed Coffee and a Selection of Fine Teas.

Schedule: Cash Bar 5:30-6:30 PM, Dinner 6:30 PM, and Speaker 7:30-9:00 PM.

Cost: Students free, Members \$30.00, Non-members \$50.00.

RSVP by December 7, 2015: RSVP for the meeting on the Eventbrite website no later than December 7th at: <https://www.eventbrite.com/e/aipg-annual-michigan-section-meeting-tickets-19225684540>.

November 11, 2015: MBGS membership meeting, Michigan State University, 7:00 pm. Dave Barnes of Western Michigan University will be presenting “Regional Reservoir Characterization and CO2 Storage Resource Assessment in a Geologically Complex, Deep Saline Formation, Middle Ordovician St. Peter Sandstone, Michigan Basin.” Additional information available at www.mbgsg.org.

June 13-15, 2016: 6th Annual Michigan Section AIPG Summer Workshop. Topic TBD. Save the Date! Look for the “Call for Abstracts” in November.

September 9-13, 2016: 53rd Annual AIPG Meeting to be held in Santa Fe, New Mexico. Details available on the National AIPG website www.aipg.org.

2015 Annual Meeting Summary

The AIPG 2015 Annual Meeting was held in Anchorage, Alaska in September. It was a great time to be in Alaska, since the main tourist season was over, and there was still a lot to see. For all of you that weren't there, you missed a good trip and a great time. Fall colors were at their peak, and the weather was perfect, allowing a view of Denali's

peak from the hotel (200 miles away) on several days.



One of several glaciers entering the water near Whittier as viewed during Saturday's cruise. Photo courtesy of Brian Burke.

Seven Michigan Section members attended the annual meeting, including Joey Barker, Bill Mitchell, Larry Austin, Erica Volansky, Adam Heft, Brian Burke, and Sara Verbrugge-Pearson. The business meetings were held on Friday. Brian presented a summary of the Section's activities during the last year, since he was the Section delegate. Adam, Brian, and Larry were present during the business lunch on Friday when Sara received her Section Leadership Award.



Photo of Sara Verbrugge-Pearson receiving the 2015 Section Leadership award from 2015 President Foster Sawyer. Photo by Adam Heft.

Adam, Brian, and Sara took a five-hour glacier cruise on a large catamaran on Saturday from Whittier. They were joined by David and Sue Abbott (CO), Helen Hickman, her husband, and Ann Murray (FL), and four students. In addition to seeing numerous

glaciers (including one up close that calved a piece into the water to the delight of all of the passengers), wildlife abounded. Sea lions, harbor seals, sea otters, a bald eagle, and a humpback whale were all sighted. The trip was so enjoyable, that after the participants returned to the meeting and talked about it, Larry Austin and several other AIPG members took the same trip several days later.



Photo of the AIPG group on the glacier cruise. Photo courtesy of Ann Murray.

Adam, Brian, Sara, Bill, and Larry all participated in the field trip to the Matanuska glacier on Sunday. This glacier was about three quarters of a mile wide and 30 miles long. Trip participants were provided with ice cleats and poles for a walk out onto the glacial ice. It was very interesting to see how much rock and debris was present on the ice surface at the ablation front. According to the field trip guides, a forest actually grows on a part of the glacier. All of the trip participants had fun, in spite of a few slips and falls, one of which resulted in a dislocated finger.



Bill Mitchell, Ann Murray (FL), Larry Austin, Adam Heft, and Sara Verbrugge-Pearson on the Matanuska Glacier field trip. Photo by Kevin Gooding extracted from the Whova Annual Meeting photo collection.

Monday was a day of technical presentations. Many good talks on a variety of subjects were given. The awards reception and evening socializing followed dinner at the "Top of the World" on the 15th floor of the hotel. The view of the sunset was incredible.

The Michigan contingent tried to get a group photograph on the observation deck afterwards; however, several of the attending Michigan members were not able to make it.



Michigan Section members Adam Heft, Sara Verbrugge-Pearson, Larry Austin, and Bill Mitchell. Photo by Wendy Davidson.



Dall Sheep in Denali National Park. Photo courtesy of Sara Verbrugge-Pearson.



A close up of Denali from within the National Park. Photo courtesy of Sara Verbrugge-Pearson.

Many of the meeting participants took an extra few days to do some sightseeing in the area around

Anchorage, the Kenai Peninsula, Denali National Park and as far north as Barrow. Wildlife abounded, and the scenery was amazing. Snow-covered mountains were everywhere.

For those of you who haven't ever attended an annual meeting, you are missing out on a great time. Plan now to attend next year's meeting in Santa Fe. Take a few extra days, bring the family, and enjoy time away from the daily grind. You won't regret it.

Augmented Reality Sandbox

The Michigan Section donated an augmented reality sandbox to the Eddy Geology Center at the Waterloo Recreation Area near Chelsea in September 2015. The production of this item was a joint effort by several individuals. Dawn Prell worked with Eddy Geology Center personnel to arrange the donation of the sandbox. The physical table was built by Adam Heft. The computer was customized by Frank Boston. Sand for the table was obtained by Linda Hensel from a location in west Michigan. The software was loaded and made operational by Eric Hendershott.



Adam Heft and Katie McGlashen of the Eddy Geology Center with the newly donated and set up augmented reality sandbox. Photo courtesy of Dawn Prell.

Many visitors to the center, including elementary school groups have already seen and played with

the sandbox. It is reportedly one of the most popular exhibits at the center.



A group of elementary school children experiencing the sandbox. Photo courtesy of Katie McGlashen of the Eddy Geology Center.

Member Input Sought

The Section Executive Committee is seeking input from members on a variety of topics. Do you have any suggestions regarding speakers/presentation topics that you would like to hear? What about field trips or other events? Some place you'd like to see us go, or something you think the membership would enjoy doing? Then make your voice heard; please send your suggestions to one of the members of the Executive Committee; any of the six members would be glad to hear from you. AIPG is your organization. Please help keep it relevant and interesting for all by participating.

Michigan Department of Environmental Quality News

MDEQ Hosts Successful Environmental Remediation and Risk Management Conference

For the first time in seven years and following significant statutory changes, the Michigan Department of Environmental Quality Remediation and Redevelopment Division (MDEQ-RRD) hosted the Environmental Remediation and Risk Management Conference this October.

The conference was held in three locations: Novi, Traverse City, and Grand Rapids; each had a regional focus with different case studies. The conference provided a variety of general topic overviews along with site specific case studies presented by both DEQ staff and project partners including consultants, developers, attorneys, and owners highlighting the collaborative approach to tackling complicated challenges at contaminated sites.



Attendees in one of the afternoon breakout sessions at the Novi Environmental Risk Management conference. Photo courtesy of Sue Leeming.

Director of the Office of the Great Lakes, Jon Allan, gave the keynote speech in Novi about the DEQ's new Water Strategy. His speech set the tone for the day linking the importance of environmental remediation and the value it has on our water here in Michigan. In Traverse City, Raymond Minervini, II kicked off the conference describing the redevelopment of the former Traverse City State Hospital that has become the thriving Village at Grand Traverse Commons where people live, work, and play in a mixed use neighborhood of condominiums, apartments, offices, shops and award winning locally-sourced food and beverage makers. Jeff Noel and Bob McFeeter inspired the 300 Grand Rapids attendees with the Harbor Shores redevelopment project that started with the vision for a golf course on contaminated properties that transformed the Benton Harbor community.

Following the keynote speaker each day was a morning plenary session that included ten minute "speed dating remediation style" presentations that were given on everything from the Toxic Substances Control Act (TSCA) to redevelopment and flexible certainty in the regulations. An overview of the statutory changes that have occurred over the past five years was also given.

The afternoon sessions featured case studies in four different tracks highlighting vapor intrusion, land and resource use restrictions, no further action reports and technical highlights, and the groundwater/surface water interface. Vapor intrusion case studies introduced challenges from former industrial sites and solutions for moving them forward and redeveloping them into useful, productive properties. Land and resource use restriction case studies featured alternative institutional controls, community ordinances, and restrictive covenants. Sites achieving no further action status included a former paper mill, a gas pipeline release in a residential area, and several other industrial facilities. Other technical highlights included reef construction projects in Thunder Bay and Saginaw Bay as well as incremental sampling case studies. Groundwater / surface water interface case studies showcased an example of the complexity of a gaining and losing stream in determining pathway relevancy, the importance of site characterization, and remediation considerations when working near surface water bodies.

Nearly 750 environmental professionals attended these conferences with 300-plus in Novi and Grand Rapids. The MDEQ would like to thank all who presented and participated in this conference to make it a success.

Sara Verbrugge-Pearson, CPG – MDEQ RRD Program Specialist

Support our Sponsors!

The Section Executive Committee would like to remind its members to support the companies advertising in the newsletter. Consider working with these companies, and when you speak with their representatives, let them know that you saw their ad in the Michigan Section newsletter.

Newsletter Notice via E-mail

Please be sure that you continue to receive the Section newsletters and other announcements. Submit an updated e-mail address to Adam Heft at heft@pbworld.com. If you move or change places of employment, don't forget to send your new contact information to both the Section and to National. If you are not receiving announcements directly from the Editor, it is because your email address is not up to date.

Section Website Reminders

As you may have noticed, the Michigan Section is working on building a database of geologic photographs on our website. We would like to continue building this collection. Please submit photographs that you are willing to share to Adam

Heft at heft@pbworld.com. Don't forget to include your name and a short explanation of what the photograph depicts. The photographs will be periodically uploaded to the website once several have been received.

If you have suggestions on other items that should be included on the History page, please let a member of the Section Executive Committee know.

Interesting Geology Links

The Editor has received links to various interesting geology-related sites. Some of the more interesting links are included here. If you have any links to geology-related links that you would like to share, please forward them (with a citation, if applicable) to the Editor.

Thanks to Mark Francek of Central Michigan University for sharing via the "Earth Science Site of the Week" emails.

Geological Map of the Arctic: <http://io9.com/your-new-desktop-wallpaper-a-fetching-geological-map-o-1669591162>.

Member's Corner

The Member's Corner includes information about the Section's membership. This is your chance to provide information on where you are and what you are doing. Simply send the information to the Editor for inclusion in this section.

No Member's Corner articles were received for this edition of the newsletter.

Employment Opportunities/Seeking Employment/Member Opportunities

To serve our members, and provide added value, the Michigan Section Executive Committee has decided to allow ads for employment or other opportunities to be posted in the Section newsletters. Employment ads will run for one edition unless renewed. There is no cost to our members or sponsors for this service. Send your employment opportunities to the Editor.

Employment Opportunities

EXECUTIVE DIRECTOR SEARCH

The American Institute of Professional Geologists is recruiting candidates for Executive Director. AIPG is a 501(c) 6 professional geoscience society dedicated to advocacy, education and competence within the profession with a membership of more than 7000 and a dedicated staff of seven at its headquarters in Thornton, Colorado.

The Executive Director is responsible for headquarters operations and for maintaining

excellent relationships with appropriate professional and technical societies, especially sister geoscience societies such as the American Geosciences Institute, the Geological Society of America, and the European Federation of Geologists. The Executive Director serves at the pleasure of the AIPG national Executive Committee in promulgation of duties to advance and maintain AIPG platforms and objectives as defined in the AIPG Bylaws and Strategic Plan.

The successful candidate will:

- Hold an advanced geoscience-related degree (MS or PhD); an additional degree in marketing or business is a plus.
- Have a minimum of 15 years of successful management experience at increasing levels of responsibility.
- Have a background in fiscal management tied to annual profitability, growth, and program expansion.
- Be a team-oriented leader with strong communication and interpersonal skills, and a proven entrepreneurial record.
- Demonstrate an appreciation of policy issues affecting geoscientists and the geosciences, especially at federal and state levels.
- Demonstrate an enthusiasm for service as a professional representative of the geosciences.
- Be willing to travel as needed. The responsibilities of this position often require weekend meetings and lengthy workweeks.
- Be committed to relocating to the Denver area.

In addition to these specific qualifications, the AIPG Executive Committee expects the successful Executive Director to help propel AIPG to a higher level of involvement in the geosciences community and in increasing its services to members. The Executive Director must be entrepreneurial, dynamic, and personable and be able to commit to an aggressive campaign to increase membership and develop additional sources of non-dues revenue. The Executive Director is also expected to seek additional alliances and collaborative arrangements with other professional societies that will serve to benefit AIPG both professionally and financially.

The Executive Director is responsible to lead the continual refinement and implementation of the AIPG Strategic Plan and ensure that both AIPG leadership and AIPG membership are engaged in its implementation.

The future of all professional societies is dependent upon the younger members of the profession becoming actively involved in the governance of the societies. In recent years, AIPG has greatly increased the involvement of students and young professionals. The successful Executive Director is expected to continue this success and vigorously engage students and younger members.

The Executive Director will report to the Executive Committee and is subject to periodic review by the Executive Director Committee. The Executive Director will also supervise the staff of AIPG and will serve as ex officio board member of the Foundation of AIPG.

Applicants are required to send: 1) a complete, detailed resume, 2) the names and addresses of at least four professional references, and 3) a concise two page essay outlining the applicant's interest and the applicant's concepts for expanding AIPG service to members, visibility, influence, and financial strength. Applications will be accepted until the position is filled. Review of qualified applications will begin immediately. Salary range between \$105,000 to \$120,000 per year. Benefits include relocation assistance, health insurance subsidy, retirement plan contributions, vacation and sick leave.

Mailing address:

AIPG Executive Director Search Committee
American Institute of Professional Geologists
12000 North Washington Street, Suite 285.
Thornton, Colorado 80241

Global Remediation Technologies Inc. seeks Environmental Professionals who will support projects in various regions of the State of Michigan including Grand Rapids, Kalamazoo, Lansing, Detroit and Traverse City. Successful candidates will work in the field and office. Field work includes performing remedial investigations, system operations/maintenance and construction oversight monitoring. Office tasks include collaborating with project teams, supporting data analysis, ACAD/GIS mapping, risk assessment, feasibility studies and remedial investigation reporting. Viable candidates will hold a bachelor's or master's degree in geology, environmental engineering or similar certification with at least two years of experience. Global Remediation Technologies, Inc. is an equal opportunity employer.

Please email your resumes to info@grtusa.com.

Newsletter Sponsors

**Brand New Name.
Decades of Experience.**

FMC Environmental Solutions is now PeroxyChem.



PEARSON DRILLING CO.

6100 West Blue Road (M-55) • Lake City, Michigan 49651

**William F. Pearson, P.E.
President**

231-839-4444
231-839-3678 Fax

Email: wpearson@pearsondrilling.biz
www.pearsondrilling.biz



- Scalable site remediation solutions for almost any budget
- Expertise and experience to meet timeline expectations
- Proven remediation technologies on over 20,000 sites worldwide
- Combined remedy approaches to maximize performance and cost savings

www.regenesis.com
(949) 366-8000



EQ – THE ENVIRONMENTAL QUALITY COMPANY

Total Waste Management
Industrial Cleaning
Waste Treatment
Transportation
Remediation
Recycling
Waste Disposal
Technical Services
Emergency Response
Wastewater Treatment



EQ IS THE ANSWER

36255 Michigan Avenue
Wayne, Michigan 48184
(800) 592-5489 www.EQonline.com

We
Now
Offer

Full Service
Sonic
Drilling



Stock DRILLING, INC.

Licensed in...
Michigan
Ohio
Indiana
Kentucky
Tennessee
Pennsylvania
New York



www.stockdrilling.com



Our Services

- 1/2 inch thru 10 inch well installation
- 2.25 inch thru 12.25 inch hollow stem auger drilling
- Sonic Drilling 4" to 12"
- Solid stem auger drilling
- Mud & air rotary drilling
- Cable tool drilling 4 inch thru 8 inch
- Core drilling
- Geoprobe drilling
- Geoprobe water sampling
- Ground water sampling
- Hydropunch sampling
- Inflatable packers
- Screened augers
- Vertical aquifer profiling
- Chemical and mechanical well development and rehabilitation
- ORC & injection services
- Well repair and cleaning
- Well removal and abandonment
- Remediation system installation and repair/abandonment
- Methane extractions points
- Pumping system installation, repair & service
- Remote water pumping systems
- Trenching and light excavation services
- Airknife services
- Direct Imaging Services
 - MIP
 - EC
 - LIF
 - HPT
 - CPT
 - Gamma Logging
 - Downhole Video

Contact Us At:

rich@stockdrilling.com

734-279-2059

734-279-2076 fax

NTH Consultants, Ltd. (NTH) employs a team of geologists, engineers, and regulatory professionals with extensive knowledge and experience in performing geologic, geotechnical, and environmental site investigations.

As a nationally recognized engineering firm, NTH has been specializing in geotechnical, environmental, and facilities engineering since 1968.

EverydayBrilliance

Brilliant engineering solutions - delivered daily.



NTH Consultants, Ltd.

Infrastructure Engineering
and Environmental Services

(800) 736-6842

www.nthconsultants.com



Fibertec

The Choice of Environmental Professionals

- » Analytical Laboratory
- » Geoprobe/Subsurface Investigations
- » Industrial Hygiene
- » NELAC Accredited
- » Electronic Data Deliverables (EDDs)
- » Private Utility Locating

Holt • Brighton • Cadillac (517)699-0345 www.fibertec.us

when your
research
demands
quality data

888.426.2151 **FONDRIEST ENVIRONMENTAL** fondriest.com

EDAC

**ENVIRONMENTAL DRILLING
AND
CONTRACTING INC.**

KIRK JOHNSON
PRESIDENT
4692 - 136th Avenue
Holland, MI 49424

Ph. (616) 738-9300
Cell (616) 403-6723
Fax (616) 738-8135
email: edac@tds.net



Characterization – Instrumentation - Remediation

David A. Wardwell
President

417 Rosewood Ave. SE
Grand Rapids, MI 49506
Office (616) 459-2849
Mobile (616) 450-5788
Fax (616) 459-2856

dave@dunetechnologies.com
www.dunetechnologies.com



Geotechnical & Environmental Drilling Services
Since 1974

MATECO Drilling
Introduces the
Geoprobe® 8140 DT Rotary Sonic

- Impressive Power / Compact Package
- Powered with a Geoprobe® GV-4 Sonic Head
- Equipped with Remote Control and Rubber Tracks
- Handles 4x6 Tooling

800-968-3475 • www.mateco.com



L · A · B S · C · I · E · N · C · E · S

YOUR LAB OF CHOICE

Founded 1970

ESC is the largest and most certified single location lab in the US

Analytical Services

Water - Drinking Water - Mold
Solid/Solid Waste - Biological - Air
NELAP, A2LA, AIHA, DOD
IHLAP, ELLAP, EMLAP, USDA

Internet Access - Password Protected Web site
Custom Sampling Kits - Saturday Receiving

ESC Lab Sciences is equipped and certified to support your work nationwide from one location.

ONE phone call, ONE point of contact, ONE Laboratory

No other lab is as accessible or prepared to handle your needs through the country.

ESC is pleased to announce that we are accepting the Reduced Volume methods for Groundwater samples for PAHs, DROs SVOCs PCBs & Pesticides in Michigan. Using 40 mL amber vials and/or 100 mL amber jars, these Reduced Volume methods replace the 1 liter amber bottles that have previously been used.

Please contact Duane Hattem (616) 307-1587 or dhattem@esclabsciences.com
www.esclabsciences.com

RENTALS • SALES • SERVICE



A Sample of Our Rental Inventory:

- GPS
- Groundwater Sampling Equipment
- PIDs/FIDs
- Soil Sampling Kits
- Toxic Gas Monitors
- XRF Analyzers for Soil Sampling
- And much more!!

Consumables and PPE Supplies:

- Ear, Head and Eye Protection
- Gloves
- Safety Apparel
- Custom Logo Imprinting Available
- And much more!!

To view our complete inventory on line visit www.ashtead-technology.com

Call us toll-free 800-242-3910

The Ashtead office servicing your area is located at:
Park 100 7144 Zionsville Rd., Indianapolis, IN 46268 • 317-238-3441



Engineering Innovation



*Excellence Delivered **As Promised***

Infrastructure • Environment • Technology • Civil • Transportation • Geotechnical
Water/Wastewater • ITS • Industrial/Commercial • Mechanical Electrical • Construction Management

Brian R. Kardos, PE • bkardos@gfnet.com • 734.973.8580 • www.gannettfleming.com • Offices Worldwide

ISO 9001:2008
CERTIFIED



- Hydrogeologic Services
- GeoEnvironmental and Remediation Services
- Solid Waste Services
- Industrial Minerals and Mining Services
- Legal Support

248-926-4008

AMEC
Environment & Infrastructure, Inc.
46850 Magellan Drive
Suite 190
Novi, MI 48377

For a list of office locations,
visit us online at amec.com





Accutest is a national environmental testing laboratory network successfully delivering defensible data for over 50 years. Accutest is the nation's 3rd largest environmental testing laboratory combining advanced technology and experienced personnel to deliver "Total Performance You Can Count On".

Environmental Testing Services & Capabilities

- Water
- Waste Characterization
- Soil, Solids & Sediments
- Petroleum Forensics
- Ambient Air, Indoor Air, Soil Vapors
- Emerging Contaminants
- Energetics & Explosives
- DoD Laboratory Accreditation
- Real Time Data Access
- Electronic Data Deliverables (EDDs)

Courier Service Available at No Additional Charge

Accutest Mid-West, Traverse City, MI
Jason Myers • 734-545-3176 • jasonm@accutest.com

Locations Nationwide www.accutest.com



Founded in 1988, ECT is a multidisciplinary environmental consulting firm with more than 200 employees to serve your needs throughout the world.

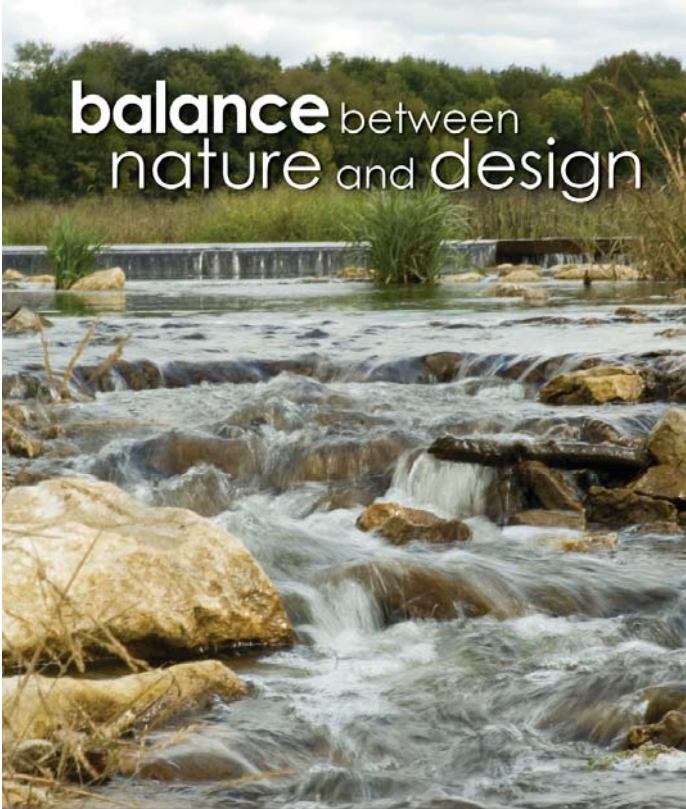
Services provided include:

- Economic feasibility evaluation
- Remediation alternatives evaluations
- Remedial action planning and design
- Tank removal and soil excavation management
- Remediation and site closure
- Expert witness testimony
- Emergency response plans
- Industrial hygiene surveys
- Worker health and safety
- Indoor air quality/sick building syndrome, mold
- Asbestos, lead paint, and radon surveys and abatement
- Environmental risk and liability management
- Wetland and biological impact assessments
- Hazardous waste and petroleum contamination investigations and assessments

An Engineering News Record Top 200 Environmental Firm since 1995.

www.ectinc.com

Operating within North Carolina as "Environmental Consulting & Technology of North Carolina, PLLC."

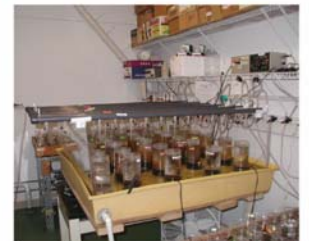


balance between nature and design



www.ftch.com | 1.800.456.3824 | Follow us on:
fishbeck, thompson, carr & huber, inc.
engineers | scientists | architects | constructors

Applied Water Quality and Environmental Sciences Since 1992



- Ecological Assessments
- Vibracore Sediment Sampling
- Water and Sediment Toxicity Testing
- Groundwater - Surface Water Interface Studies

• John Barkach ph:238-538-0900 jbarkach@glec.com



▶ CREATING FLUID SOLUTIONS

Let our Water Services Group work with you—from characterization and evaluation, to design-build and compliance—to deliver effective strategies for all your water management needs.

- Water & Wastewater Treatment
- Groundwater
- Coastal & Marine
- Surface Water & Hydrogeology

Technical excellence. Sustainable solutions. Global reach.

golder.com/water



LimnoTech

Water | Scientists
Environment | Engineers

LimnoTech is an international leader in helping clients make informed decisions to solve their water resource challenges using the latest water science and engineering.

- Watershed Planning and Management
- Environmental Modeling
- Aquatic Ecosystem Assessment and Restoration
- Drinking Water Supply and Protection
- Contaminated Site Evaluation and Remediation
- Surface Water and Groundwater Characterization
- Stormwater and nonpoint source water management
- Permitting and Regulatory Assistance
- Hydrogeological Studies
- Green Infrastructure, Water Footprinting and Low-Impact Development Solutions
- Climate Change Adaption and Water Sustainability

www.limno.com

Ann Arbor, MI • Washington, DC
Minneapolis-St. Paul Region • Los Angeles Region



**PROVIDING SUSTAINABLE SOLUTIONS
FOR DEVELOPMENT, CONSTRUCTION,
RESTORATION AND REDEVELOPMENT
CHALLENGES FOR OVER
50 YEARS**

**Passionate People Building and
Revitalizing our World**

**(800) 837-8800
www.sme-usa.com
Indiana • Michigan • Ohio**

TestAmerica

THE LEADER IN ENVIRONMENTAL TESTING

TestAmerica offers local service and access to our network of laboratories to meet all your environmental testing needs.

- Largest network of full-service laboratories in the U.S.
- Experienced personnel, knowledgeable about Michigan's environmental regulatory program
- Local, personalized customer service, technical support, courier and sampling services
- TotalAccess® 4.0 - the industry's leading real-time online data management tool

For more information, please contact:

Gail Carr | Tel: 734.276.7655
Gail.Carr@testamericainc.com

Dave Lanzola | Tel: 216.857.2972
Dave.Lanzola@testamericainc.com

www.testamericainc.com



Engineering
Environmental Consulting
Program Management
Construction
Technical Services

www.tetrattech.com

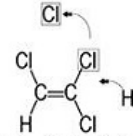
710 Avis Drive
Ann Arbor, MI 48108
734-213-2204



ORIN Technologies



Chemical Oxidation



Reductive Dechlorination



Free Product Removal



Metal Remediation



Traditional and Advanced Oxidation



Wastewater Treatment

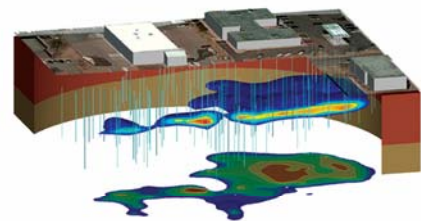
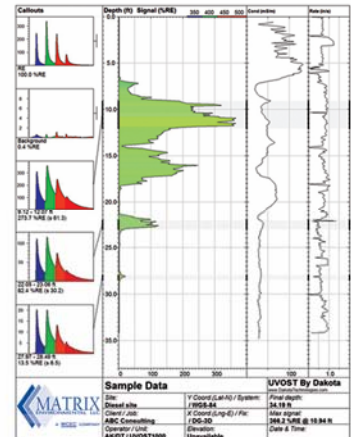
ORIN Technologies, Inc. (ORIN) mission is to provide innovative remediation and water treatment services using emerging and proven technologies resulting in total client satisfaction.

ORIN TECHNOLOGIES
405 INVESTMENT COURT
VERONA, WI 53593
(608) 838-6699
lkinsman@orinrt.com
<http://ORINRT.com>



Site Characterization Professionals

- ◆ **Geoprobe®**
Track Units, 4x4 Trucks and Portable Units
- ◆ **Direct Sensing**
UVOST - Laser Induced Fluorescence
MIP - Membrane Interface Probe
HPT - Hydraulic Profiling Tool
EC - Electrical (Soil) Conductivity
SCOST - Soil Color
- ◆ **Integrated Site Visualization (ISV™)**
2D and 3D visualizations of direct sensing data



Galena, OH
(740) 965-8271

MATRIX ENVIRONMENTAL LLC
www.matrixenv.com
email: customerservice@matrixenv.com

Maple Grove, MN
(763) 424-4803
Morris, MN
(320) 489-4610

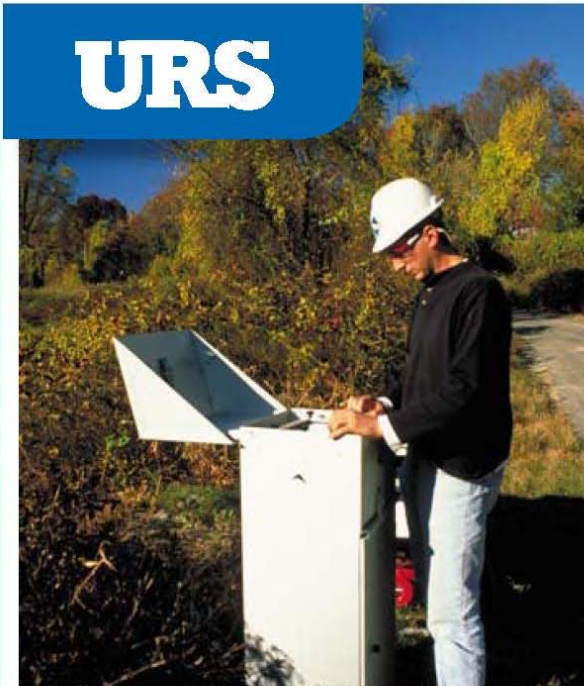


Specializing in engineering services vital to our community and quality of life.

- Environmental Engineering ■ Construction Testing ■ Civil Engineering
- Geotechnical Engineering ■ Structural Engineering ■ UVOST Services

660 Woodward Avenue
Suite 2430
Detroit, Michigan 48226
313.963.2721
www.somateng.com

Detroit ■ Taylor ■ Grand Rapids ■ Cleveland ■ Brooklyn Heights ■ Beltsville ■ Washington, DC



100+ Years of Complete Environmental
Unmatched, Reliable and Sustainable

ENVIRONMENTAL SERVICES

- Due Diligence
- Compliance Audits
- Remediation and Redevelopment
- Remedial Investigation, Design and Construction
- Ecological and Wetlands
- Groundwater Modeling/Contaminant Transport
- Risk Assessment
- Air Quality



For more information, please visit us at:
www.urs.com



Service from a larger **footprint**

Conestoga-Rovers & Associates
(CRA) and GHD have come
together in an exciting merger
unparalleled in our industry

We have joined together to create
a global leader in engineering,
environmental consulting,
architecture, and construction
services

For more information about GHD,
visit **www.ghd.com**



TECHNICAL SKILL .
CREATIVE SPIRIT .

Celebrating Over 55 Years of Award Winning Service

Engineering Solutions that work for your business

SURVEYING
GEOTECHNICAL ENGINEERING
CIVIL ENGINEERING
LANDSCAPE ARCHITECTURE
ENVIRONMENTAL CONSULTING
CONSTRUCTION ENGINEERING



Canton, MI
(734) 397-3100

Detroit, MI
(313) 961-9500

Lansing, MI
(517) 316-9232

Monroe, MI
(734) 289-2200

Traverse City, MI
(231) 929-7330

Maumee, OH
(419) 891-2222

Columbus, OH
(614) 441-4222

Cleveland, OH
(216) 378-1490

WWW.MANNIKSMITHGROUP.COM



Superior

ENVIRONMENTAL CORP

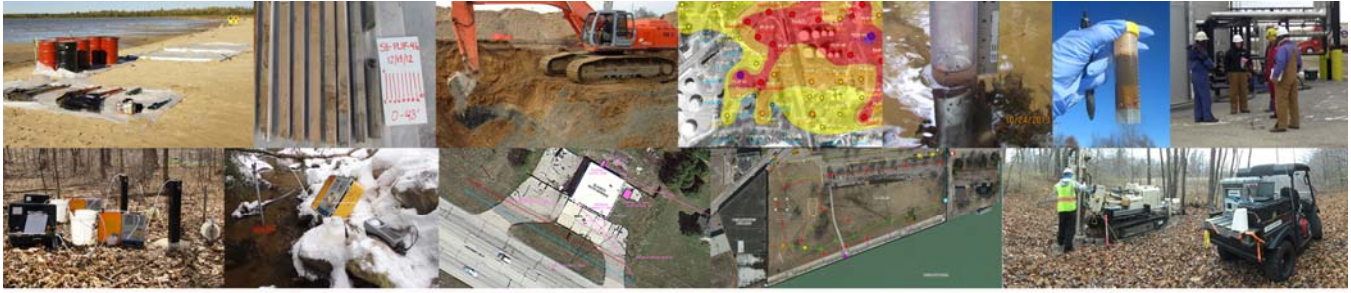


- Hydrogeological Investigations
- Remedial Investigations
- Remediation System Design And Construction
- LUST Management
- Phase I/II ESA
- Baseline Environmental Assessments
- Pilot Studies
- Fate and Transport Modeling
- Drilling
- Badger Injection

**Superior Environmental Corp
1128 Franklin Street
Marne, MI 49435
(800) 968-4006**

**Serving the Great Lakes Region
and beyond.**

For a complete list of locations,
please visit us at
www.superiorenvironmental.com



PROFESSIONAL SERVICES OFFERED BY GLOBAL REMEDIATION TECHNOLOGIES, INC.

Field Investigation Services

- Remedial investigation
- Phase I & Phase II ESA
- Hydrology/Surface water assessment
- Environmental sampling & monitoring
- Hydrogeology assessment (aquifer testing/profiling)

Mapping & Modeling

- Groundwater flow maps
- Cross-section development
- Reactive transport modeling
- Environmental impact mapping
- 3D contaminant solids modeling

Environmental Engineering

- Feasibility studies
- Bid specifications
- Treatability study design
- Remediation system design & engineering
- System start-up, evaluation & optimization

Compliance

- Risk assessments
- Low-cost closure strategies
- Air permitting & emissions reporting
- Litigation support & expert testimony
- NPDES permitting & regulatory strategies

GRT, Inc. 1102 Cass Street - Traverse City, Michigan 49684 · PHONE: 231-941-8622 FAX: 231-941-4131 · Website: www.grtusa.com

Contact: Richard Raetz



GEOSCAPE

EST



2010

Rock Shop



ROCKS - MINERALS - FOSSILS
JEWELRY - LANDSCAPE ROCKS

Open Weekends: Fri&Sat: 11am-7pm
Sun: 11am-5pm

37111 RED ARROW HWY,
PAW PAW, MI

 Like us on
Facebook!



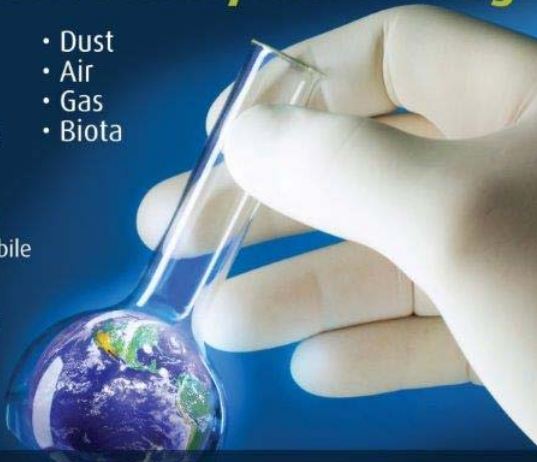
Contact Brian Root
+1 616 399 6070
www.alsglobal.com

Full-Service Analytical Testing

- Soil
- Water
- Sediment
- Leachates
- Dust
- Air
- Gas
- Biota

Plus:

- Webtrieve™
Online & Mobile
Data Access
- After-hour &
Weekend
Sample
Receipt



Our Holland, MI laboratory is an **Ohio VAP-certified** facility.
We provide **daily courier service** to the
greater Columbus, Cleveland and Cincinnati areas.

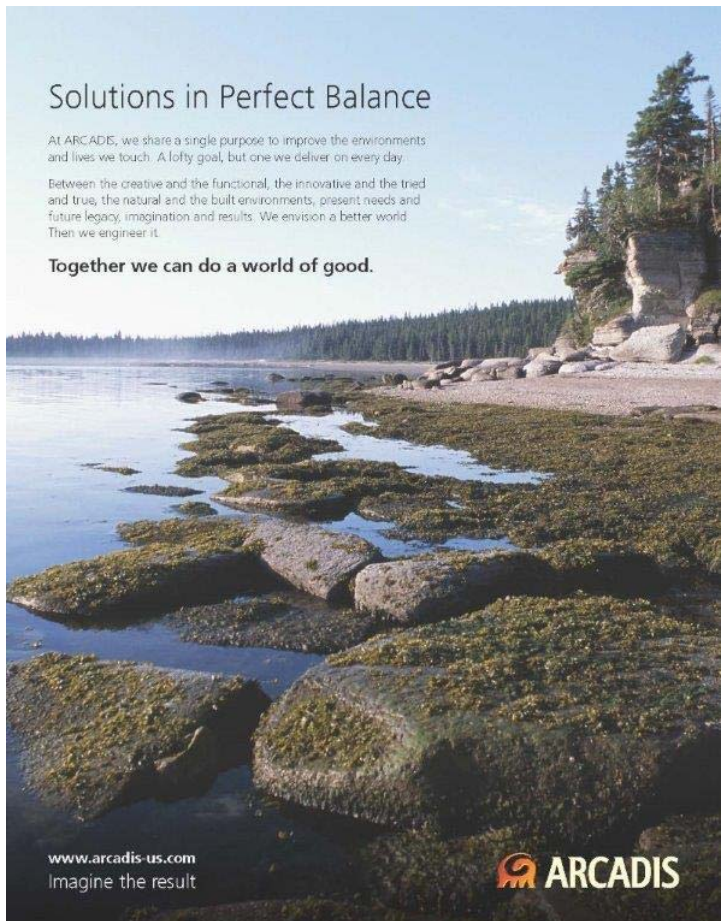
Contact Brian Root to schedule a pick-up today!

Solutions in Perfect Balance

At ARCADIS, we share a single purpose to improve the environments and lives we touch. A lofty goal, but one we deliver on every day.

Between the creative and the functional, the innovative and the tried and true, the natural and the built environments, present needs and future legacy, imagination and results. We envision a better world. Then we engineer it.

Together we can do a world of good.



www.arcadis-us.com
Imagine the result

 ARCADIS



Innovative Remediation TECHNOLOGIES

Innovative Remediation Technologies (IRT) is a complete turnkey remediation service based in Chicago that works for you to achieve your remediation goals by utilizing our own state-of-the-art mixing and injection equipment. Since 1997, IRT has successfully remediated hundreds of sites in 26 states. We routinely handle sites contaminated with VOCs, such as chlorinated solvents, herbicides, and various petroleum products, including motor oils, kerosene and heating oils. With us, you have a proven and trusted partner to aid in achieving your site remediation goals.

IRT offers innovative solutions to your site remediation issues by providing site evaluation, customized remedial design, and complete field application services. We work solely with environmental consultants and engineers and provide innovative site remediation solutions, including In-Situ Chemical Oxidation (ISCO) with enhanced bioremediation, activated carbon (AC) and soil mixing at a wide array of industrial and commercial sites in a variety of subsurface environments.

For more information about IRT's services, visit our website at www.irtechllc.com.

ERG Environmental Resources Group
Assessment • Remediation • Compliance • Risk Management
ergrp.net

Assessment
Remediation
Compliance
Risk Management

28003 Center Oaks Ct., Ste. 106
Wixom, MI 48393
248.773.7986 p 248.924.3108 f

75 W. Walton Ave., Ste. C
Muskegon, MI 49440
231.747.8556 p 231.747.8558 f



Civil & Environmental Consultants, Inc.



CEC Detroit's team of engineers and professionals offers integrated expertise to tackle diverse challenges in the Michigan communities where we practice.

If you're looking for a strategic business partner or meaningful employment with opportunity for growth, look to CEC.

Contact: Ryan Dunning | rdunning@cecinc.com
44725 Grand River Avenue, Suite 104
Novi, MI 48375
Local: (248) 374-8600 | Toll-Free: (866) 380-2324

Services

- ▶ Civil Engineering
- ▶ Ecological Sciences
- ▶ Environmental Engineering & Sciences
- ▶ Waste Management
- ▶ Water Resources

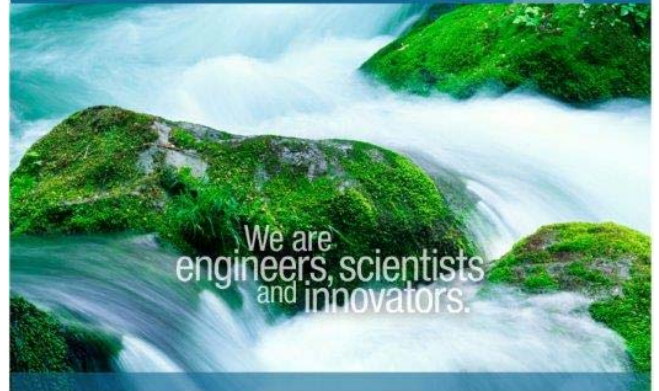
Industries

- ▶ Manufacturing
- ▶ Mining
- ▶ Natural Gas
- ▶ Power
- ▶ Public Sector
- ▶ Real Estate
- ▶ Solid Waste



www.cecinc.com

Geosyntec[®] consultants



Providing exceptional project solutions related to the environment, natural resources, and civil infrastructure

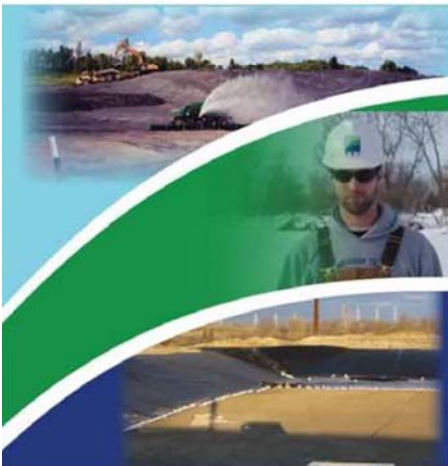
Contact
Rob Ferree
3520 Green Court
Ste. 275
Ann Arbor, MI 48105
(734) 332-8004

geosyntec.com

NATURAL RESOURCE TECHNOLOGY, INC.

"smarter solutions, exceptional service, value"

Natural Resource Technology provides environmental consulting services to private and public clients in the energy, industrial, real estate, government, and legal sectors.



- Ecotoxicology
- Sediment Management
- Site Characterization & Permitting
- Brownfield Redevelopment
- Contaminated Site Closure
- Water Resource Management
- Solid & Hazardous Waste Management
- Corporate Risk Management
- Compliance

2260 E. Saginaw Street
East Lansing, MI 48823
517-896-1288



www.naturalrt.com ■ 414-837-3607

**BIG OR SMALL
WE ALL
CAN MAKE A
WORLD
OF DIFFERENCE**



Incorporated in 1992, Global Environmental Engineering Inc. is a full service environmental engineering firm specializing in a variety of environmental services and wastewater treatment. Global employs engineers, geologists, biologists, environmental scientists and technicians with offices in Traverse City and Flint, Michigan.



LEARN MORE AT
WWW.GLOBALEEI.COM



DAKOTA
TECHNOLOGIES

High Resolution
NAPL Characterization
Since 1993

UVOST®
TarGOST®
Darts™
DyeLIF™

learn more at www.dakotatechnologies.com



The BARR logo consists of the word "BARR" in a bold, blue, sans-serif font, positioned below a solid blue square.A black and white photograph of two workers in safety gear (hard hats, safety glasses, and harnesses) at a utility site. One worker is on the left, looking towards the right, and the other is on the right, looking upwards. They are working with a large piece of equipment that is being hoisted by a crane. The background shows a utility pole and some trees.

great opportunities

Barr's employee- and community-focused culture has earned us repeated recognition as a "best place to work" locally and nationally. *CE News*, *Environmental Business Journal*, and *ZweigWhite* frequently name us one of the top environmental and civil engineering firms in the nation to work for. What differentiates Barr from other firms?

- positive relationships between employees and company leaders
- career coaching and mentoring
- an annual training budget for self-directed development and training for every employee
- flexibility and commitment to the importance of worklife balance
- community involvement
- a compensation structure that rewards performance, compensates every hour worked, and includes ESOP and dividends

who we are and what we do

Barr is an employee-owned firm that integrates engineering and environmental expertise to help clients develop, manage, process, and restore natural resources.

We serve the fuels, power, and mining industries, natural-resources management organizations, and other clients with complex problems. Barr makes a company-wide commitment to client service, applying the principles of exceptional service to staff and client interactions.

Barr is seeking engineers and scientists at all levels to join us in solving our clients' problems. View our current openings and apply online at www.barr.com/careers.



Barr Engineering Co.
800.632.2277
www.barr.com

Linked in

f Find us on
Facebook

resourceful. naturally.®

**Michigan Section
American Institute of Professional Geologists
MEETING ANNOUNCEMENT**

December 10, 2015

MICHNER PLATING – TIME CRITICAL REMOVALS

Featured Speakers

[Jeff Kimble and Tricia Edwards, EPA Region 5](#)

Location: Kellogg Center, Michigan State University, East Lansing, MI (Map attached)

Cost: Students Free, Members \$30.00, Non-members \$50.00. **Registration is payable electronically via Eventbrite (see link below) or at the door by cash or check; however, prepayment is preferred and speeds up the check-in process at the door. Please note: Cancellations made within 48 hours of the meeting and/or “No Shows” will be charged and expected to pay the registration fee.**

Dinner: Antipasto Platter with Grilled Vegetables, Kalamata Olives, Artichokes, Cherry Peppers, Mushrooms, Provolone, and Salami, Classic Caesar Salad, Croutons, Parmesan Cheese, and Caesar Dressing, Italian Bread, Salad with Marinated Cucumber and Tomatoes with Balsamic and Italian Dressings on the Side; Orecchiette Pasta Salad with Grilled Vegetables, Fresh Mozzarella and Roasted Tomatoes with Balsamic Drizzle; Traditional Chicken Parmesan; Grilled Salmon with Toasted Pine Nuts, Parsley, and Butter Sauce; Porchetta-Roasted Pork Loin Marinated with Garlic Rosemary Demi Cheese Tortellini Alfredo; Smoked Brisket of Beef, Smokey Tomato Mushroom Sauce, Risotto with Sautéed Mushrooms, Asparagus, and Bell Peppers, Ratatouille Vegetables, Crusty Italian Loaves of Bread and Tomato Focaccia, Mini Cannoli Chocolate Biscotti, House-made Petit Desserts include Minimis, Toasted Almond Amaretto Mousse, and Italian Rum Cake, Freshly Brewed Coffee and a Selection of Fine Teas.

Time: Cash Bar 5:30-6:30 PM, Dinner 6:30 PM, and Speaker 7:30-9:00 PM

RSVP: On the Eventbrite website no later than December 7th at: <https://www.eventbrite.com/e/aipg-annual-michigan-section-meeting-tickets-19225684540>. You can select your meal choice and pay online if you choose, or pay at the door by cash or check.

Abstract: Hundreds of drums, vats, and containers of plating waste are being cleaned up by the USEPA at two plating shops in Jackson, MI. The facilities were foreclosed on by the City, although they had no resources to address the hazards that remained on site. The sites were referred to US EPA.

Speaker Bios: Jeff Kimble is an On Scene Coordinator (OSC) with EPA in Region 5 and is stationed in Grosse Ile, Michigan. Jeff started his career as an EPA OSC in 2002 after nine years in the private sector working for various hazardous waste and technical consulting firms. He received his Bachelor's degree in Geology in 1994 from Mount Union College.

In a career mostly spent in the emergency response realm, Jeff has experience in a varied list of regionally and nationally significant events responding both from the private sector to support operations and as an EPA OSC. This list includes the 2001 D.C. Anthrax Response, the Shuttle Columbia Recovery effort, several tours of duty after Hurricane Katrina, and most recently as the Incident Commander and FOSC of the Enbridge Line 6B Pipeline Spills in Marshall, Michigan.

Tricia Edwards is an On Scene Coordinator (OSC) with EPA in Region 5 and is stationed in Grosse Ile, Michigan. Tricia started her career as an EPA OSC in 2008 after twelve years in the private sector. Tricia started working for a hazardous waste treatment facility as an intern and continued to grow with the company to eventually manage the emergency response team. After six years, Tricia left the emergency response world to broaden her career by working for a private manufacturing company overseeing over 50 locations for various environmental compliance needs.

As an On Scene Coordinator with US EPA she has been involved in area planning, exercise planning and design, special deployments, conducting time critical removals, and responding to emergencies.

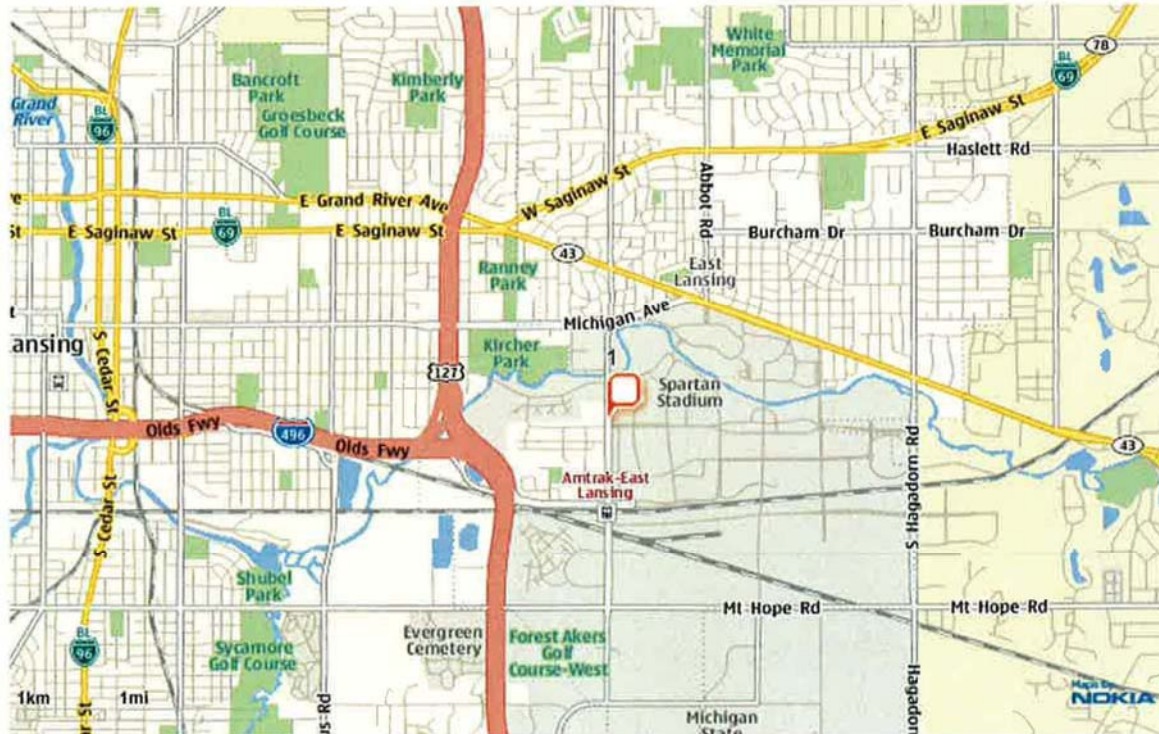
AIPG Michigan Section Meeting December 10, 2015

Kellogg Center, East Lansing

YAHOO! MAPS

powered by **Nokia**

Kellogg Ctr, East Lansing, MI 48824



When using any driving directions or map, its a good idea to double check and make sure the road still exists, watch out for construction, and follow all traffic safety precautions. This is only to be used as an aid in planning

From the East - I-96 West, to US-127 (exit 106) North (3.1 miles) to Trowbridge Road exit East (.5 miles) to Harrison Avenue; turn left North approximately 1 mile on the right (four traffic lights up).

From the Southwest - I-94 East to I-69 North, to I-496 East; East (5 miles) to Trowbridge Road (exit 9) East (.5 miles) to Harrison Avenue; turn left North approximately 1 mile on the right (four traffic lights up).

From the West - East on I-96 to I-496 (exit 95) East (9.7 miles) to Trowbridge Road (exit 9) East (.5 miles) to Harrison Avenue; turn left North approximately 1 mile on the right (four traffic lights up).

From the North - South on US-27 to US-127 South (8.5 miles) to Trowbridge Road exit East (.5 miles) to Harrison Avenue; turn left North approximately 1 mile on the right (four traffic lights up).